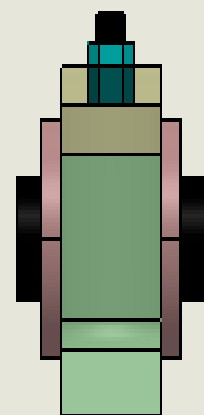
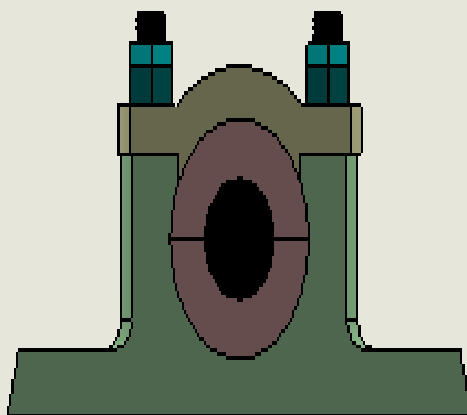
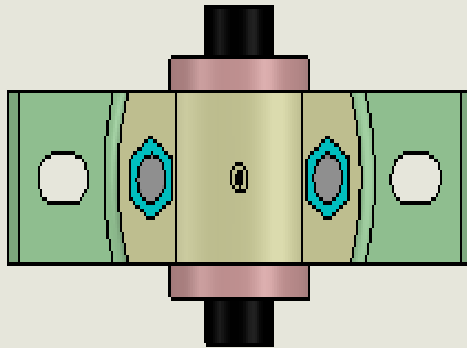
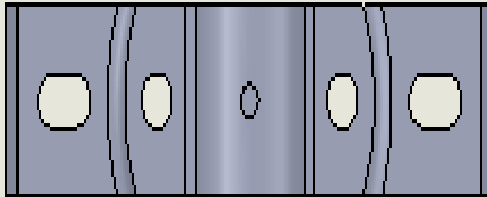


## PLUMMER BLOCK ASSEMBLY

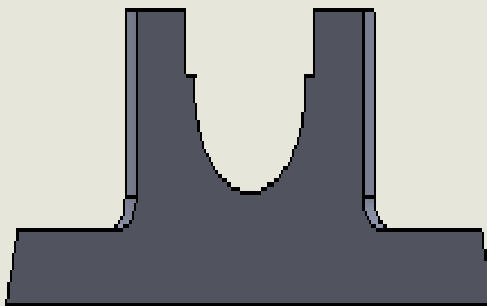


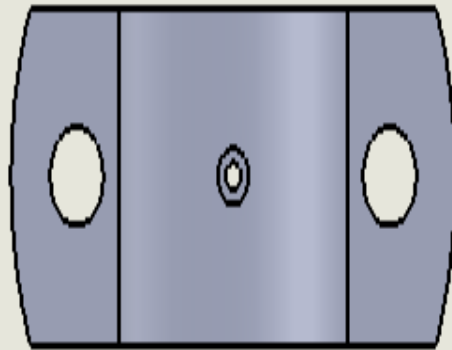


Item 1 – Lower Body

Material :- Steel

Process :- Casting /Machining  
/Drilling



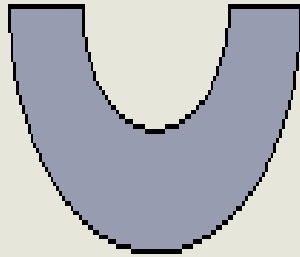


Item 2 – Upper Body

Material :- Steel

Process :- Casting /Machining  
/Drilling

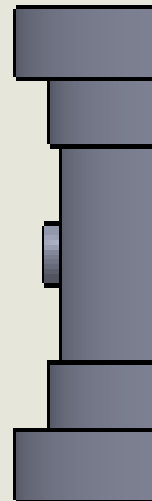
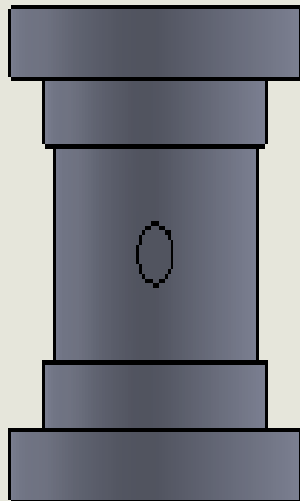




Item 3 – Bearing

Material :- Steel

Process :- Metal Cutting

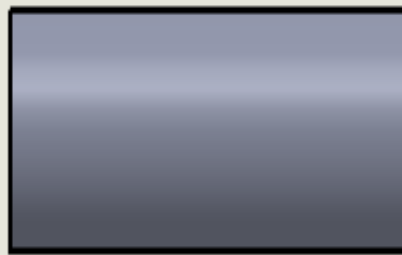




Item 4 – Shaft

Material :- Cast Iron

Process :- Casting





Item –Threaded Bolt

Material :- Steel

Process :- Machining/Threading

